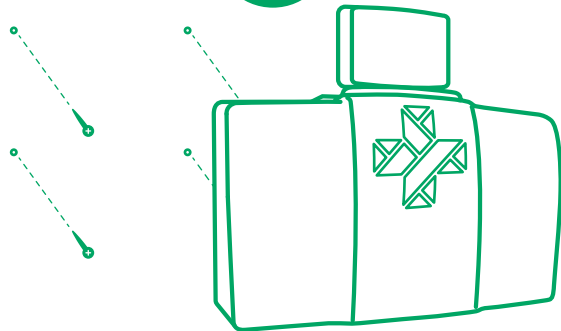




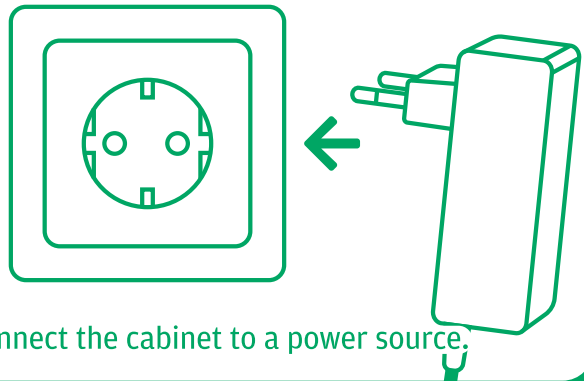
Installation of the smart first aid cabinet

1



Install the smart first aid cabinet on the wall.

2



Connect the cabinet to a power source.

3

www.firstaidcloud.com

Register at **firstaidcloud.com** and you will be given a PIN code.

4

Select Wi-Fi Network 



Add the device to the Wi-Fi network.

5

OK

Enter the six-digit PIN code you received.

6



DONE!